

Keeping your Congregation healthy

- ◆ All staff should be trained to cough into their sleeve or clothing—never cover mouth with a bare hand.
- ◆ Teach your staff to cover both the nose and mouth when sneezing.
- ◆ Encourage your entire congregation to get their annual flu shot.
- ◆ Proper hand washing is the #1 way to prevent the spread of colds and the flu.
Everyone at your organization should wash their hands with soap and water often, especially after going to the bathroom.
- ◆ Staff should avoid touching their eyes, nose, and mouth—and avoid touching the eyes, nose, and mouth of the children.
- ◆ Insist staff stay home if they are ill.
- ◆ Make sure all rooms contain single use gloves. All staff should use universal precautions when cleaning up blood, throw up, or other body fluids.



Links & Resources

Tooele County Health Department
www.tooelehealth.org

Tooele County Emergency Mgmt.
www.tcem.org

Utah's Pandemic Flu Website
www.pandemicflu.utah.gov

Utah Department of Health
www.health.utah.gov

U. S. Dept. of Health & Human Services
www.pandemicflu.gov

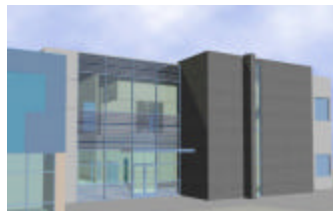
Center for Disease Control & Prevention
www.cdc.gov/flu/pandemic/

World Health Organization
www.who/int

**151 North Main Street
Tooele Utah 84074**

**Phone: 435-843-2300
Fax: 435-843-2304
E-mail: bwहितehouse@utah.gov
www.tooelehealth.org**

Tooele County Health Department



Preparing

for Pandemic Flu

A guide for Faith Based Groups



Tooele County Health Department

"Protecting Your Future"

**TOOELE
COUNTY
HEALTH DEPARTMENT**

Pandemic Flu Outbreak

- Pandemic Flu is a new outbreak which spreads rapidly from one person to another. People do not have immunity to this new flu.
- At first the new virus attacks birds and animals, and later begins to infect humans.
- Since it's a brand new virus, scientists have not been able to make a vaccine to prevent it.
- Hundreds of thousands (maybe millions) will get sick. Many will die.
- Health officials are concerned about the Avian (bird) flu in Asia and Europe, because it could easily spread from one person to another.
- No one knows when the next pandemic flu outbreak will occur.
- Large pandemics occurred in 1918, 1957, and again in 1968. Since people travel quickly all over the world, it would be easy to spread a new virus from one person to another.



Utah Prepares Faith Based Organizations

Be Informed:

- ◆ Listen for pandemic influenza updates you see on the TV or hear on the radio.
- ◆ Understand pandemic flu is very different than the regular flu
 - >More people will be sick
 - >Those who become sick may be seriously ill
 - >There is no vaccine available
- ◆ A pandemic will change the way people live their lives
 - >Schools/daycares may be closed
 - >Grocery stores may close
 - >Churches/community centers may close

Have a plan:

- Establish an emergency communications plan in your organization. Include key staff members along with members of your congregation in decision making.
- Make sure your organization has sufficient infection prevention supplies on hand (soap, alcohol based hand sanitizer, and tissues).
- Form a committee of staff members to develop a plan for dealing with pandemic flu.
- Assign staff to network with Tooele County Health Department on a regular basis to stay informed about public health warnings.
- Visit Tooele County's Environmental Health and ask for a copy of the Flu Response Plan and compare it with the one for your organization.

Talk to your people; parents, students, families:

- ▽ Talk to faculty, congregation members, parents, and students about pandemic flu and what the plan is for your school.
- ▽ When appropriate, include pandemic flu information in class discussions.
- ▽ Brainstorm ways you can provide church activities, and provide other services in the event that social gatherings are suspended due to pandemic influenza.
- ▽ Make sure staff and parents are aware who they can contact at the Tooele County Health Department for more information.
- ▽ Make sure staff and families understand your pandemic flu plan. Help them understand they need a back up plan in place because their church may be closed.
- ▽ Make it clear to parents and other caregivers that sick adults & children must stay home. They should not be able to attend church social functions.

Tooele County Health Department

151 North Main Street
Tooele Utah 84074

Phone: 435-843-2300
Fax: 435-843-2304
E-mail: bwhitehouse@utah.gov
www.tooelehealth.org